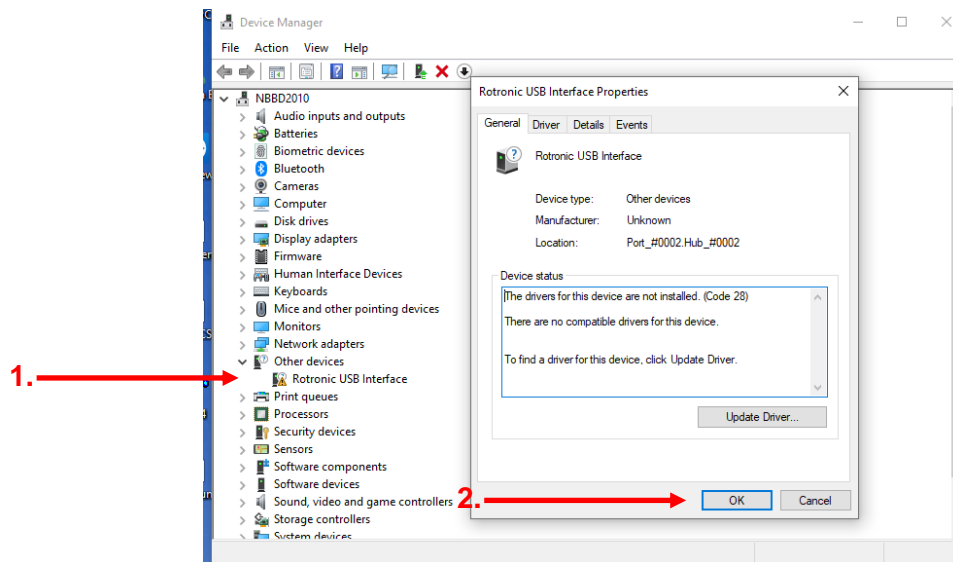
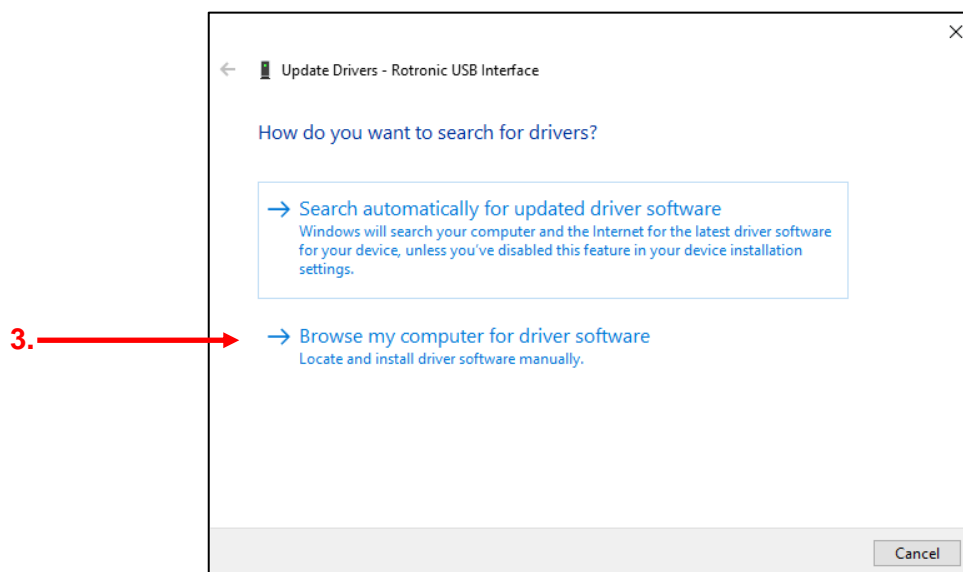


Instruction for installing USB Driver with WINDOWS 10

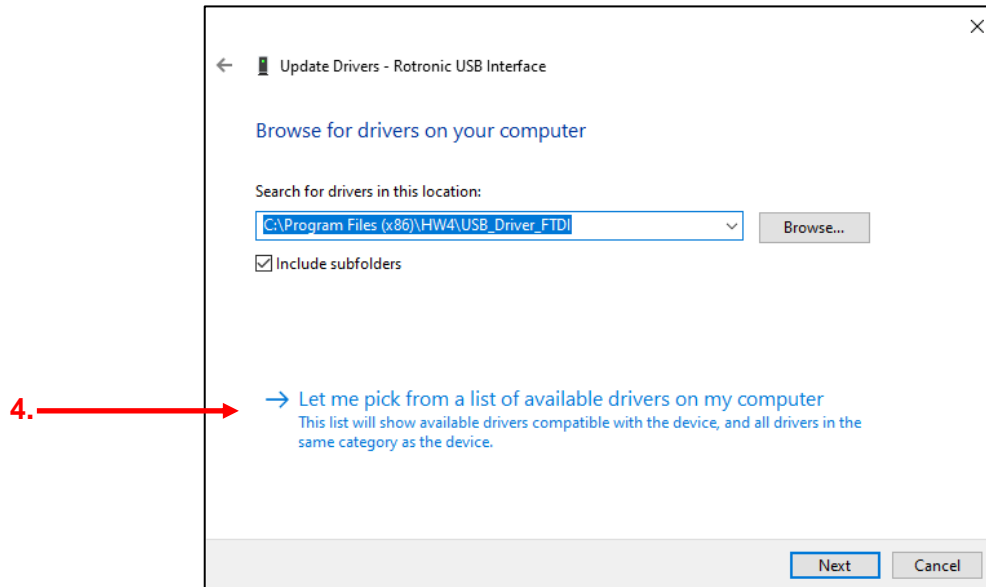
1. Open the Device Manager
2. Double click on Rotronic USB Interface under “Other devices” in the “Windows Device Manager”.
3. Click on “Update Driver...”



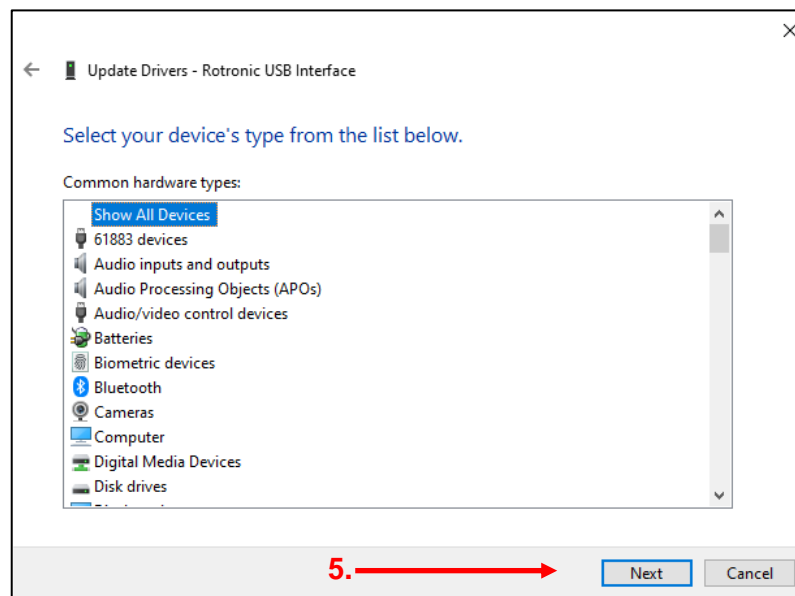
4. Select “Browse my computer for driver software”



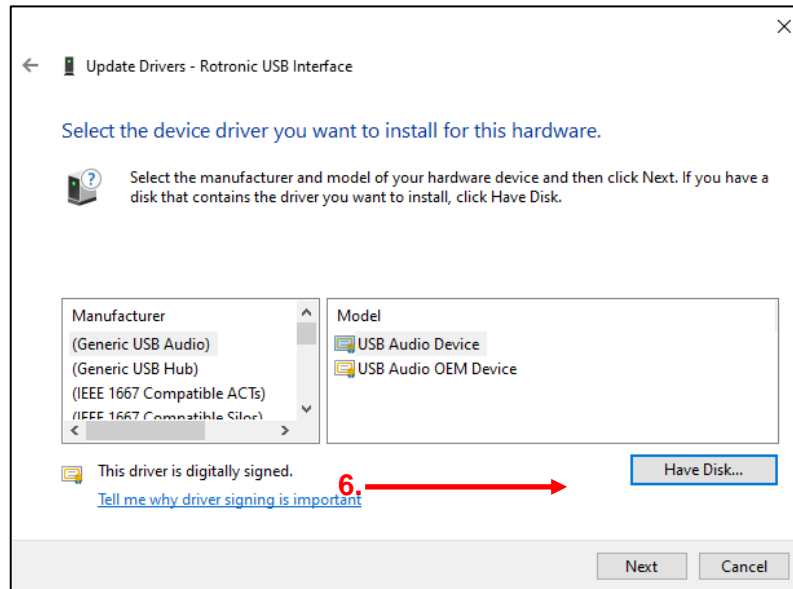
5. Select “Let me pick from a list of available drivers on my computer”



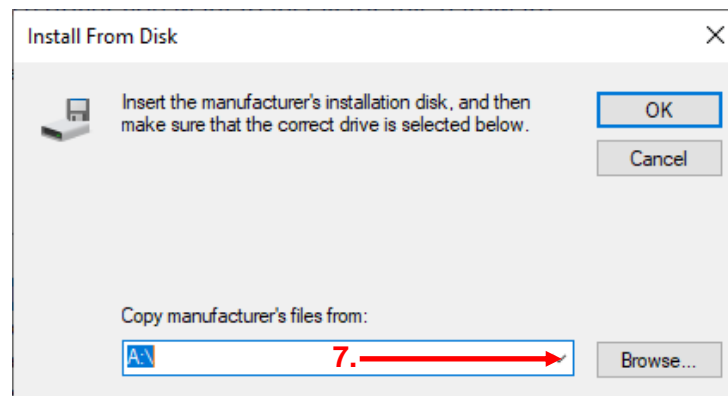
6. Click on “Next”



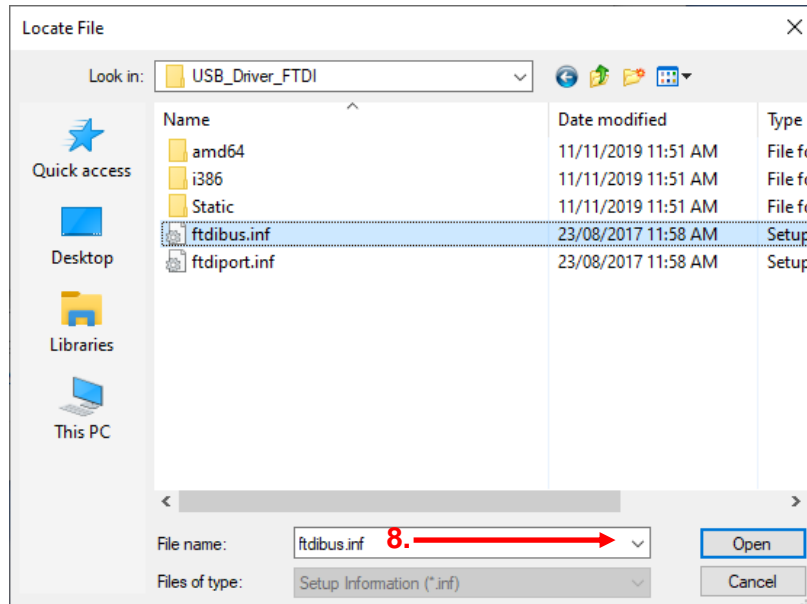
7. Click on “Have Disk...”



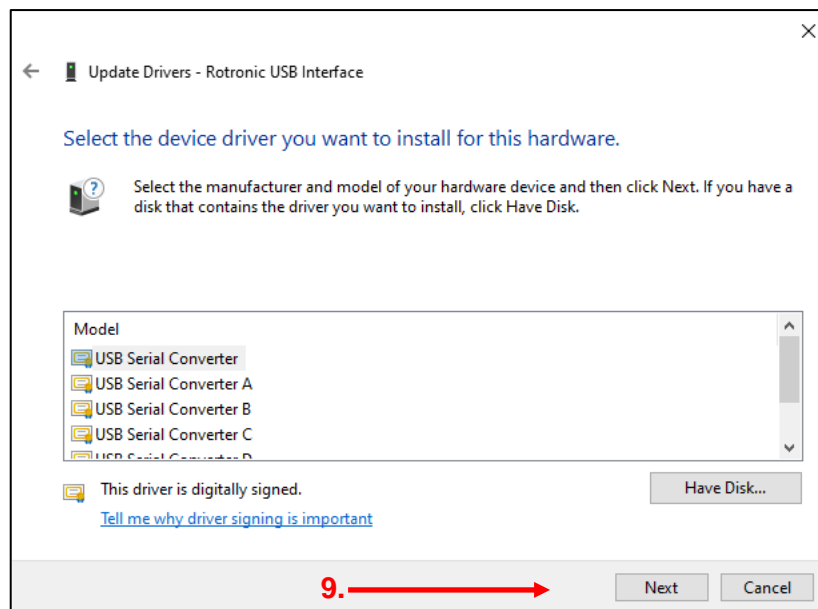
8. Click on “Browse...”



9. Go to “C:\Program Files (x86)\HW4\USB_Driver_FTDI” and open ftdibus.inf.



10. Select “USB Serial Converter” and click on Next



11. Confirm this message with Yes

